

High-quality images and a host of productivity features in a 34" FHD display

Designed with professional users in mind, the Q34E2A is equipped with a 3-sided frameless 34" IPS/3FL panel with a 21:9 ratio, 300 cd/m² brightness, and WFHD resolution. Its wide array of functions and features includes wide viewing angles of 178°/178°, a tiltable stand, VESA mount, built-in speakers, auto source input, and eye-friendly technologies like Flicker-Free and Low Blue Mode.

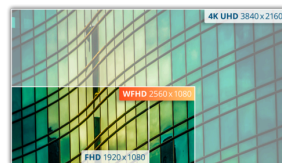


功能特点



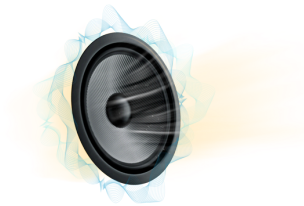
三邊超窄 邊框設計

超窄邊框的設計提供更舒適的觀看感受，同時還能節省空間，且適用於多顯示器拼接，大幅提升視覺體驗。



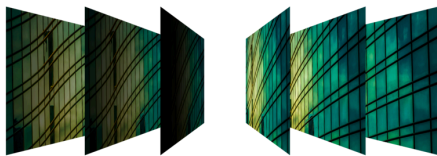
寬 FHD (WFHD) 分辨率

Wide Full HD (WFHD) 具有 2560 x 1080 分辨率，可提供卓越的画质和清晰的图像，展现每一个细节。宽屏 21:9 的宽高比非常适合观看大尺寸电影或沉浸在最新的游戏里，而且它在工作时提供更多空间。



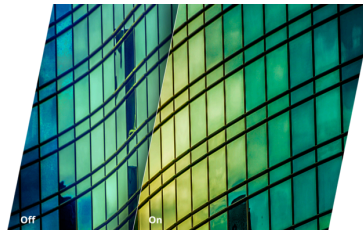
喇叭

玩家無需再額外購買喇叭或耳機，就能從顯示器享受高品質的音效體驗。



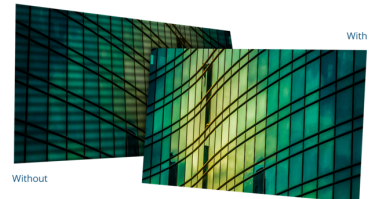
IPS 廣視角面板

可視角度達到178°，讓使用者在任何角度觀看均呈現清新亮麗且完整的畫面，同時展現色彩一致性，以實際原色呈現逼真鮮活的畫面。



淨藍光功能 有效減少藍光

長時間接觸藍光可能會導致眼睛疲勞、睡眠障礙或頭痛，淨藍光功能藉由控制色溫，有效減少有害的藍光光波。



護眼的不閃屏技術

多數LED螢幕使用 PWM (Pulse Width Modulation) 脈衝寬度調變技術調光以掌控亮度，但此脈衝技術易產生閃爍情況，尤其在昏暗微光環境中，更易造成頭疼和眼睛疲勞損傷等不舒適狀況。不閃屏技術則是用運順暢的DC直流背光系統，藉由強化電壓以降低閃爍頻率，提供消費者更健康護眼的使用情境。

通用性	
Model Name	Q34E2A
Channel	B2B
Product line	Essential-line
Design family	E2
Launch date (ETA)	11/10/2020
EAN	4038986118378

DISPLAY INFORMATION	
Screen size (inch)	34,0
Screen size (cm)	86,36
Flat / Curved	Flat
Display hardness	3H
Panel treatment	Antiglare (AG)
Pixels per Inch	81,0
Panel resolution	2560x1080
Aspect ratio	21:9
Panel type	IPS
Backlight type	WLED
Max Refresh rate	75 Hz
Response time GtG	4 ms
Static contrast ratio	1000:1
Dynamic contrast ratio	50M:1
Viewing angle (CR10)	178/178
Display colours	16.7 Million
Brightness in nits	300 cd/m ²

VIDEO FEATURES	
Sync technology (VRR)	Adaptive Sync
Blue Light Technology	Low Blue Light
Colour space (sRGB) CIE 1931 %	123,0
Colour space (Adobe RGB) CIE 1931 %	91,0
Flicker-Free	Flicker Free

CABINET INFORMATION	
Bezel Colour (front)	Black
Cabinet colour (backside)	Black
Cabinet finishing (backside)	Texture
Removable stand	是的
Speaker power	3 W x 2
Kensington Lock	是的
Vesa wallmount	100x100

人体工学	
Tilt	-6/23
Swivel	-180/180
Pivot	No

可持续性	
Energy star	Energy star 8
EPEAT	Silver
WEEE	是的
REACH compliant	是的
RoHs compliant	是的
HF	是的
Mercury free	是的
Recycable packaging material	100 % recycable

POWER CONSUMPTION	
Power supply	Internal
Power consumption on (Energystar test method) in watts	36,0
Power consumption standby in watts	0,3
Power consumption off in watts	0,3
Energy class	E

REGULATORY COMPLIANCE	
CB	是的
CE	是的
TUV-Bauart-Mark	是的
ISO 9241-307	是的
Microsoft WHQL	是的

CONNECTIVITY INFORMATION	
HDMI	HDMI 1.4 x 2
DisplayPort	DisplayPort 1.2 x 1
Audio Output	Headphone out (3.5mm)

產品尺寸	
Product dimensions incl. base (WxHxD) mm	475(H) x 817.4(W) x 253.8(D)
Product dimensions excl. base (WxHxD) mm	370.7(H) x 817.4(W) x 55.7(D)
Packaging dimensions (WxHxD) mm	506(H) x 940(W) x 187(D)
Gross weight incl. package (in kg)	10,9
Net weight excl. package (in kg)	8,1

包装盒内容

HDMI cable	1.8
Power cable C13	1.8

OTHER INFORMATION

Warranty period	3 years
------------------------	---------