

BUILT FOR THE
COMPETITIVE ELITE.

POWERED BY
Q27GAZD

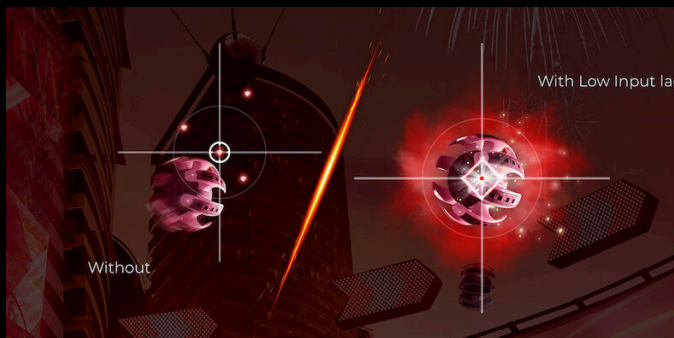


Experience true next-gen performance on a 27" QD-OLED display with 2560×1440 resolution, lightning-fast 240Hz refresh rate and 0.03ms response time. With 99% DCI-P3 color, NVIDIA G-Sync Compatible support and precision gaming tools, it delivers stunning contrast, fluid motion and competitive accuracy.

- **Flicker Free**
- **Low Input Lag**
- **Become a Gaming-Optimized Weapon for your Team with 240Hz and 0.03ms**
- **G-SYNC Compatible**
- **QHD Resolution**

FLICKER FREE

AOC Flicker-Free Technology utilises a DC (Direct Current) backlight panel, reducing flickering light levels. With eye strain and fatigue absolutely minimized, feel free to enjoy those long, intense gaming sessions in comfort!



LOW INPUT LAG

Unleash your reflexes by switching to the AOC Low Input Lag mode. Forget graphical frills: this mode rewires the monitor in favour of raw response time, giving the ultimate edge in hair trigger stand offs.

BECOME A GAMING-OPTIMIZED WEAPON FOR YOUR TEAM WITH 240HZ AND 0.03MS

With 240Hz monitors being the standard in professional e-sport tournaments and competitions, embrace team solidarity and enjoy an ultra-smooth experience with the incredible responsive of 240Hz and 0.03ms, honing your sharpness and gaming abilities to the next level, especially where optimal team collaboration is required.



G-SYNC COMPATIBLE

Enable flawless picture quality by synchronising new generations of NVIDIA graphics cards* with this G-SYNC Compatible monitor. *Please refer to NVIDIA website for the complete list of GPUs working with G-SYNC Compatible monitors

QHD RESOLUTION

With 2560 x 1440 resolution, Quad HD (QHD) offers superior picture quality and sharp imagery that reveals the finest details. The widescreen 16:9 aspect ratio provides plenty of space to spread out and work, plus allows you to enjoy games or movies in their original size.



GENERAL		VIDEO FEATURES		CONNECTIVITY INFORMATION	
Model Name	Q27GAZD	Sync technology (VRR)	G-SYNC Compatible	HDMI	HDMI 2.0 x 1
Brand	AOC	HDR (High Dynamic Range)	HDR Ready	Digital HDCP (HDMI version)	HDCP 2.3
Channel	Gaming	Blue Light Technology	Anti Blue Light	DisplayPort	DisplayPort 1.4 x 1
Product line	AOC Gaming	Multiview (PbP, PiP)	PbP, PiP	Audio Output	1x Audio out
Design family	G40	Flicker-Free	Flicker Free	DP HDCP version	HDCP 2.3
Launch date (ETA)	10/4/2025				
DISPLAY INFORMATION		CABINET INFORMATION		PRODUCT DIMENSIONS (METRIC)	
Screen size (inch)	27.0	Bezel Colour (front)	Black	Product dimensions incl. base (WxHxD) mm	609.3(W) x 454.3 (H) x 192.2(D)
Flat / Curved	Flat	Cabinet colour (backside)	Black	Product dimensions excl. base (WxHxD) mm	609.31(W) x 355.3 (H) x 57.03(D)
Curvature Radius	Flat	Cabinet finishing (backside)	Texture	Product with stand (kg)	4.96
Panel treatment	Antiglare (AG)	Kensington Lock	Yes	Product without stand (kg)	4.11
Panel resolution	2560x1440	Vesa wallmount	100x100		
Aspect ratio	16:9	ERGONOMICS			
Panel type	OLED	Tilt	-3(+/-2)~21.5(+/-1.5)		
Backlight type	QD OLED	SUSTAINABILITY			
Max Refresh rate	240 Hz	CEC	Yes		
Response time GtG	0.03 ms	Carton material	Paper		
Static contrast ratio	1.5M:1	Carton material print	Color Print		
Viewing angle (CR10)	178/178	POWER CONSUMPTION			
Display colours	1.073B (10 bits)	Power supply	Internal		
Brightness in nits	SDR: 200 cd/m ² (Typ.)(Full White) / HDR ON: 200 cd/m ² (Typ.)(Full White) / 400 cd/m ² (Typ.)(APL 10%)	Power consumption standby in watts	0.5		
Local Dimming Zones	OLED	Power consumption off in watts	0.3		

⚡ LEGAL DISCLAIMER

The monitor may appear different from the feature image. The products, accessories, cable(s) supplied with the product may vary in type, quantity, and/or specifications in line with country- or region-specific requirements. Specifications are subject to change without notice. The above functionality may vary depending on the user's actual usage conditions. This product is sold with a limited manufacturer's warranty. Please refer to the warranty terms for coverage details. All Rights reserved.