

EVERY MILLISECOND
MATTERS

POWERED BY
AG352QCX



200Hz



CURVED MONITOR

AMD
FreeSync
Premium



Armed with a huge 35-inch curved MVA panel in 21:9 format, this monitor immerses gamers deeper into virtual worlds than ever before. It is equipped with FreeSync Premium and a refresh rate of 200Hz for an ultra-smooth gaming experience

- **200Hz 刷新率**
- **1800R 弯**
- **AMD FreeSync Premium 告别撕裂卡顿**
- **淨蓝光功能 有效减少蓝光**
- **宽 FHD (WFHD) 分辨率**

200HZ 刷新率

200Hz 的刷新率是 60Hz 行业标准的三倍多。释放显卡的全部潜力：屏幕撕裂、运动模糊和卡顿现象都已根除，您的游戏最终将如预期般流畅，您的技能可以达到新的高度。

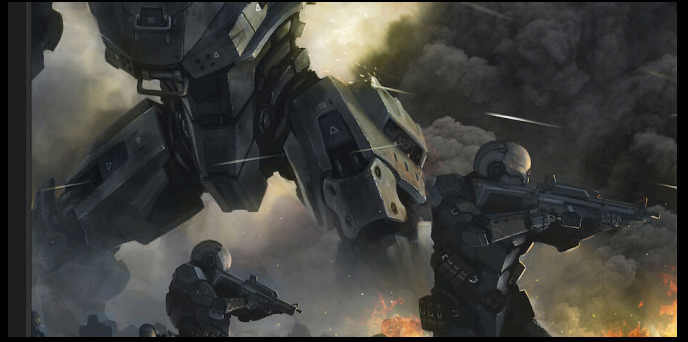


1800R 弯

弧形设计环绕着您，让您成为行动的中心，提供身临其境的游戏体验。

AMD FREESYNC PREMIUM 告別撕裂卡頓

此技術將電競顯示器性能提升至更高一層次！透過高度準確的亮度與廣色域檢測，實現非凡的 HDR 視覺效果，且不再因畫面撕裂的問題破壞遊戲體驗，並沉浸在更流暢的遊戲畫面中，讓玩家在競賽中始終領先一步。



寬 FHD (WFHD) 分辨率

Wide Full HD (WFHD) 具有 2560 x 1080 分辨率，可提供卓越的画质和清晰的图像，展现每一个细节。宽屏 21:9 的宽高比非常适合观看大尺寸电影或沉浸在最新的游戏中，而且它在工作时提供更多空间。



淨藍光功能 有效減少藍光

長時間接觸藍光可能會導致眼睛疲勞、睡眠障礙或頭痛，淨藍光功能藉由控制色溫，有效減少有害的藍光光波。

通用性

| | |
|-------------------|---------------|
| Model Name | AG352QCX |
| Channel | Gaming |
| Product line | AGON |
| Design family | AG2 |
| Launch date (ETA) | 29/5/2017 |
| EAN | 4038986115896 |

DISPLAY INFORMATION

| | |
|---------------------------|-----------------------|
| Screen size (inch) | 35,0 |
| Flat / Curved | Curved |
| Curvature Radius | 2000R |
| Display hardness | 3H |
| Pixel Pitch (mm) | 0,3202 |
| Panel resolution | 2560x1080 |
| Aspect ratio | 21:9 |
| Panel type | MVA |
| Backlight type | WLED |
| Max Refresh rate | 200 Hz |
| Response time GtG | 4 ms |
| Static contrast ratio | 2000:1 |
| Dynamic contrast ratio | 50M:1 |
| Viewing angle (CR10) | 178/178 |
| Display colours | 16.7 Million |
| Brightness in nits | 300 cd/m ² |

VIDEO FEATURES

| | |
|--------------------------|---------------------|
| Sync technology (VRR) | Freesync Premium |
| Blue Light Technology | Low Blue Light |
| Flicker-Free | Flicker Free |

CABINET INFORMATION

| | |
|-------------------------|---------|
| Bezel Colour (front) | 黑色 |
| Speaker power | 5 W x 2 |
| Vesa wallmount | 100x100 |

人体工学

| | |
|-----------------------|-------|
| Height adjust (mm) | 120mm |
| Pivot | No |

游戏功能

| | |
|-----------------------|-----------------------------------------------|
| Gaming style | MMORPG, Action, Beat'm up, Racing |
| Game mode | RTS, FPS, Racing, Gamer 1, Gamer 2, Off |
| Gaming convenience | G-menu |

可持续性

| | |
|-------------------------------------|------------------|
| WEEE | 是的 |
| Mercury free | 是的 |
| Recyclable packaging material | 100 % recyclable |

POWER CONSUMPTION

| | |
|-----------------------------------------------------------------|----------|
| Power supply | External |
| Power consumption on (Energystar test method) in watts | 60,0 |
| Power consumption standby in watts | 0,5 |
| Power consumption off in watts | 0,5 |
| Energy class | B |

REGULATORY COMPLIANCE

| | |
|-----------------|--------------|
| CB | 是的 |
| CE | 是的 |
| TUV-Bauart-Mark | 是的 |
| EAC | 是的 |
| FCC | 是的 |
| Microsoft WHQL | 是的 |
| Pixel policy | ISO 9241-307 |

CONNECTIVITY INFORMATION

| | |
|-------------------------|----------------------------------------|
| HDMI | HDMI 2.0 x 1 |
| DisplayPort | DisplayPort 1.2 x 1 |
| USB Hub | 是的 |
| USB type downstream | 2 |
| USB fast charge port | 是的 |
| Audio Output | 耳機 (3.5mm) |
| USB generation | USB 3.0 (2 USB downstream ports) |
| D-SUB (VGA) | 1x |
| DVI | 1x DVI-D |

產品尺寸

| | |
|---------------------------------------------------|--------------------------------|
| Product dimensions incl. base (WxHxD) mm | 587(H) x 847(W) x 266.45(D) |
| Packaging dimensions (WxHxD) mm | 300(H) x 980(W) x 527(D) |
| Gross weight incl. package (in kg) | 15,3 |
| Net weight excl. package (in kg) | 11,8 |

包装盒内容

| | |
|------------|-----|
| HDMI cable | 1.8 |
|------------|-----|

| | |
|-------------------|-----|
| D-SUB (VGA) cable | 1.8 |
|-------------------|-----|

| | |
|-------------------|-----|
| Displayport cable | 1.8 |
|-------------------|-----|

| | |
|-------------|-----|
| Audio cable | 1.8 |
|-------------|-----|

| | |
|----------------|-----|
| Power cable C5 | 1.8 |
|----------------|-----|

OTHER INFORMATION

| | |
|-----------------|---------|
| Warranty period | 3 years |
|-----------------|---------|

| | |
|------|-----------------------------------------|
| MTBF | 50.000 hours (excluded backlight) |
|------|-----------------------------------------|